

Install IPTV on Enigma2/Dreambox/Vu+

As a matter of fact, these two IPTV boxes are currently very popular in the United Kingdom and other parts of the world, and I believe that's why you have one at home! We assume you are here because you would like to learn how to go about the Enigma 2 or Zgemma IPTV setup process, which is standard across the board.

In order to add channels to your Enigma2/Dreambox/Vu+ device, follow the below steps:

STEP 1:

Go to your Enigma2 and get your IP address.

Go to Settings/Setup/System Network Device Setup Adapter Settings.

And get your IP address it starts with 192.168.....

STEP 2:

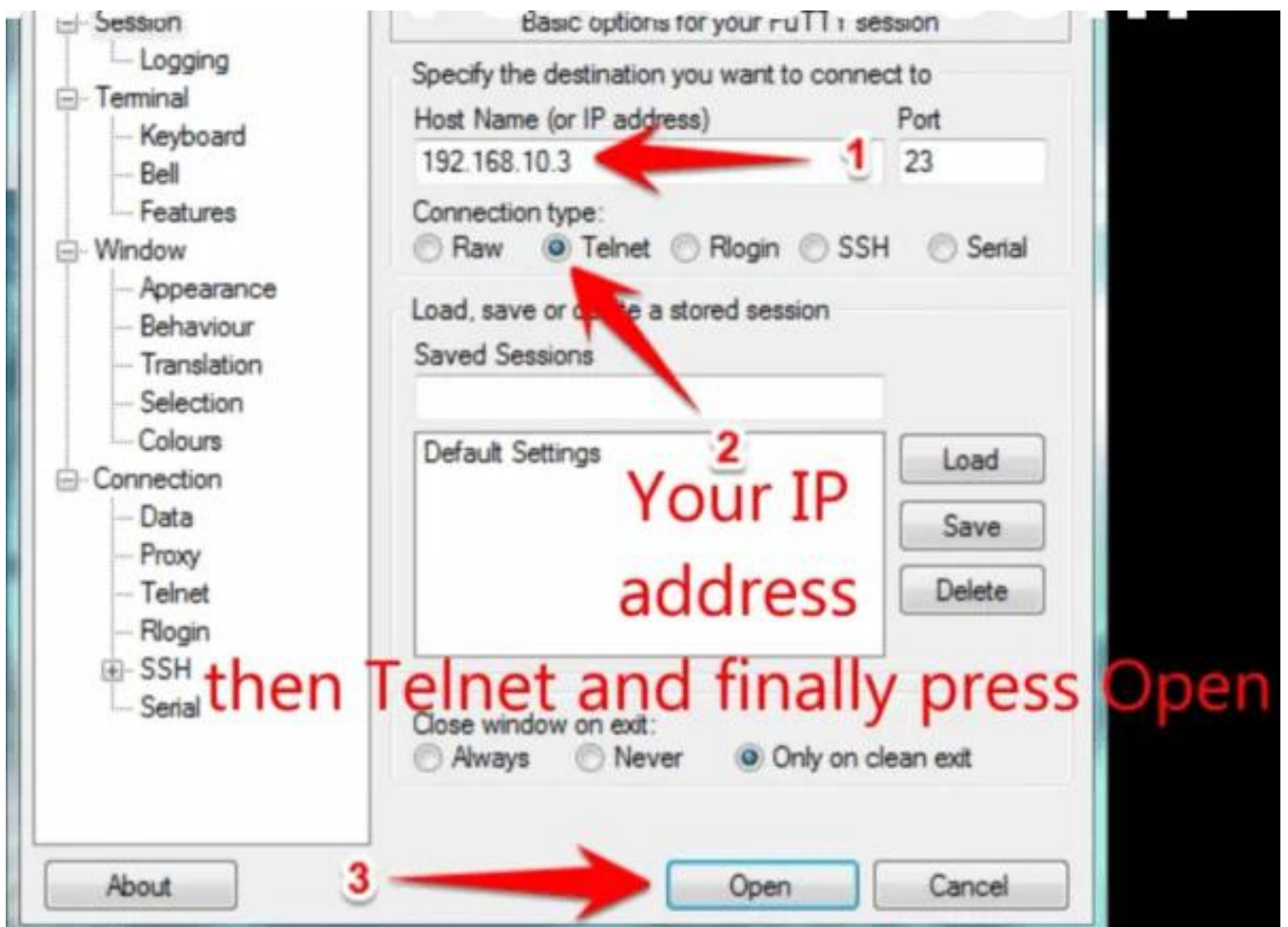
Go to your windows PC and download Putty Software.

Putty dURLload URL <https://the.earth.li/~sgtatham/putty/latest/x86/putty.exe>

STEP 3:

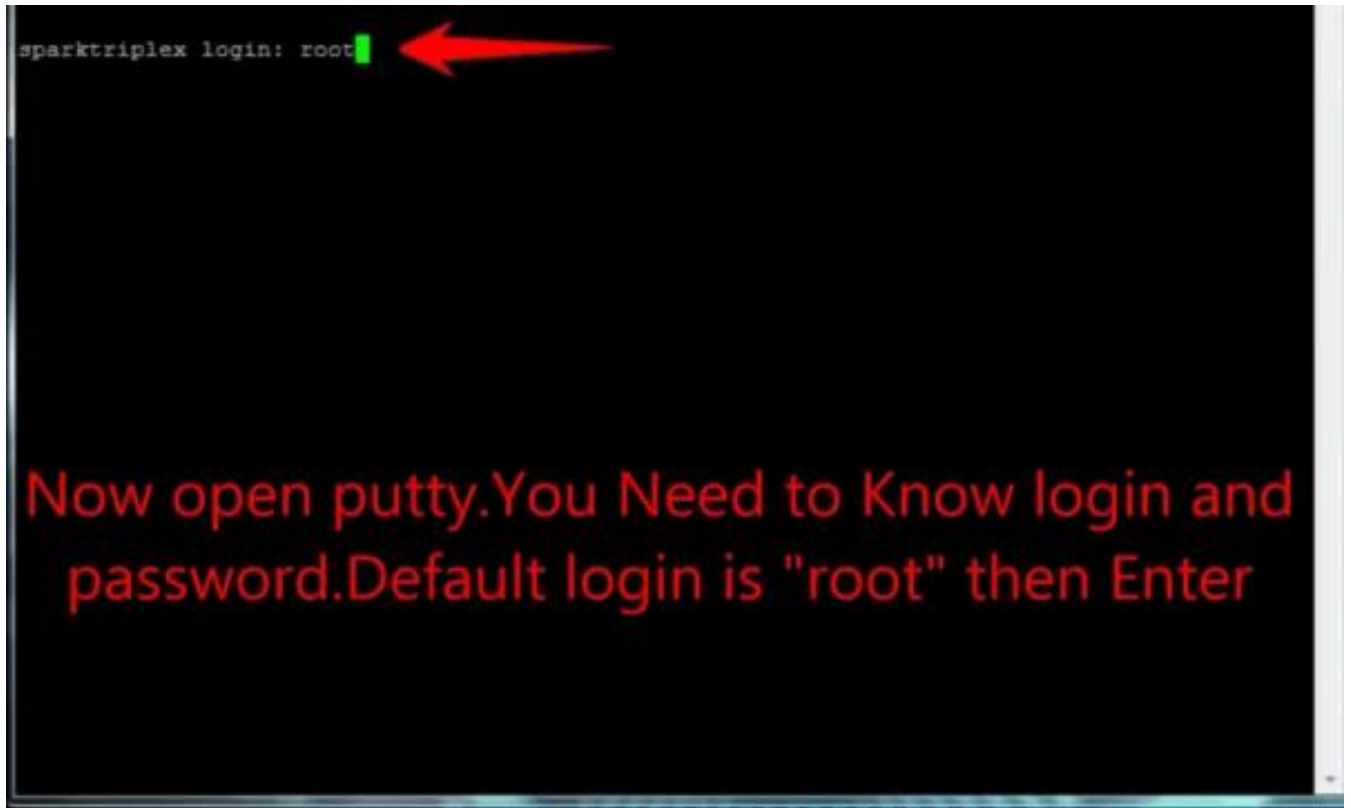
Open Putty and follow these steps.

Add your IP address of your Enigma (Same IP as step 1) Port 23 Connection type Telenet Click on "Open".



STEP 4:

Your default login and password are root.



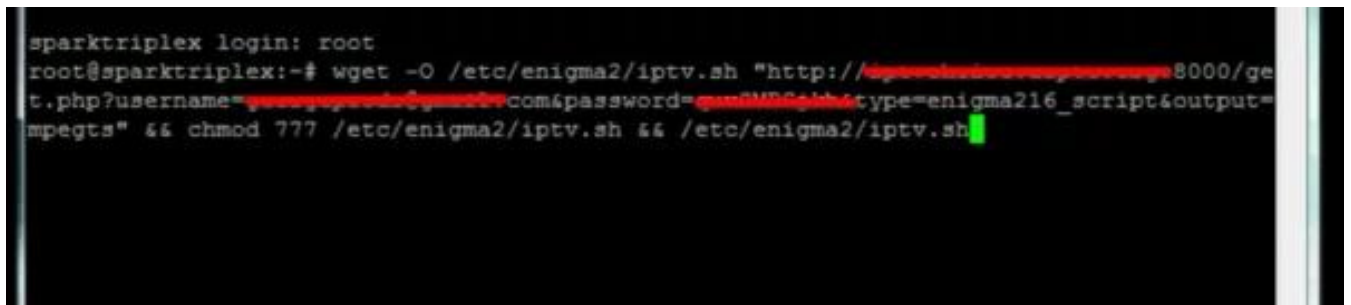
STEP 5:

Copy your URL line (you will get it after you order your subscription).



STEP 6:

Use RIGHT CLICK MOUSE BUTTON after you enter your line press “ENTER”.



Using your right click mouse button
choose paste and press Enter

STEP 7:

Type reboot and your device will restart.

```
sparktriplex login: root
root@sparktriplex:~# wget -O /etc/enigma2/iptv.sh "http://sparktriplex.com/get.php?username=sparktriplex&password=sparktriplex&type=enigma216_script&output=mpegts" && chmod 777 /etc/enigma2/iptv.sh && /etc/enigma2/iptv.sh
Connecting to sparktriplex.com (192.168.1.1)
iptv.sh 100% |*****| 1153 0:00:00 ETA
rm: can't remove '/etc/enigma2/userbouquet.IPTVchoiceE2_tv.tv': No such file or directory
Connecting to sparktriplex.com (192.168.1.1)
userbouquet.IPTVchoi 100% |*****| 166k 0:00:00 ETA
[+]Creating Folder for iptv and rehashing...
writing to the file.. NO NEED FOR REBOOT
<?xml version="1.0" encoding="UTF-8"?>
<e2simplexmlresult>
  <e2state>True</e2state>
  <e2statetext>reloaded bouquets</e2statetext>
</e2simplexmlresult>
<?xml version="1.0" encoding="UTF-8"?>
<e2simplexmlresult>
  <e2state>True</e2state>
  <e2statetext>reloaded bouquets</e2statetext>
</e2simplexmlresult>
root@sparktriplex:~# reboot
```

Then reboot and press Enter. Enigma2 device restart

Now you will find the *IPTV* folder, all IPTV channels are inside your IPTV folder.